

# Reception to Year 2



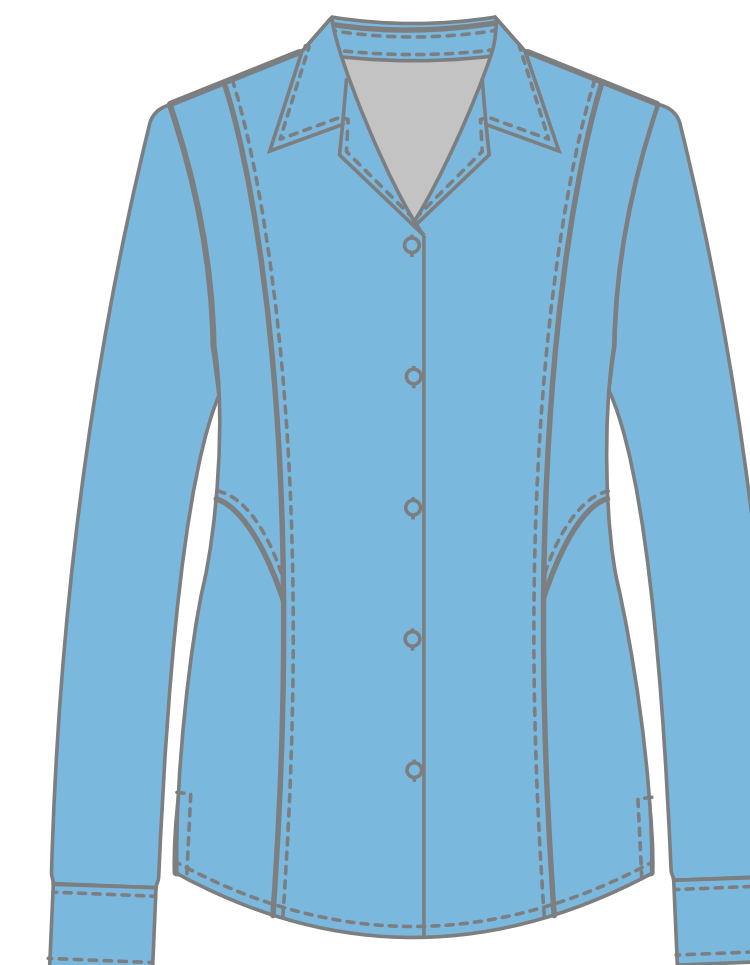
£38.50 ex VAT



£26.50 ex VAT



Textured Blouse  
£22.50 ex VAT (Twin Pack)



Textured Blouse  
£22.50 ex VAT (Twin Pack)



£36.50 ex VAT

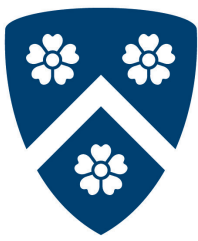


£40.00 ex VAT





# Year 3 - Year 5



Tormead  
*Prep*



£38.50 ex VAT



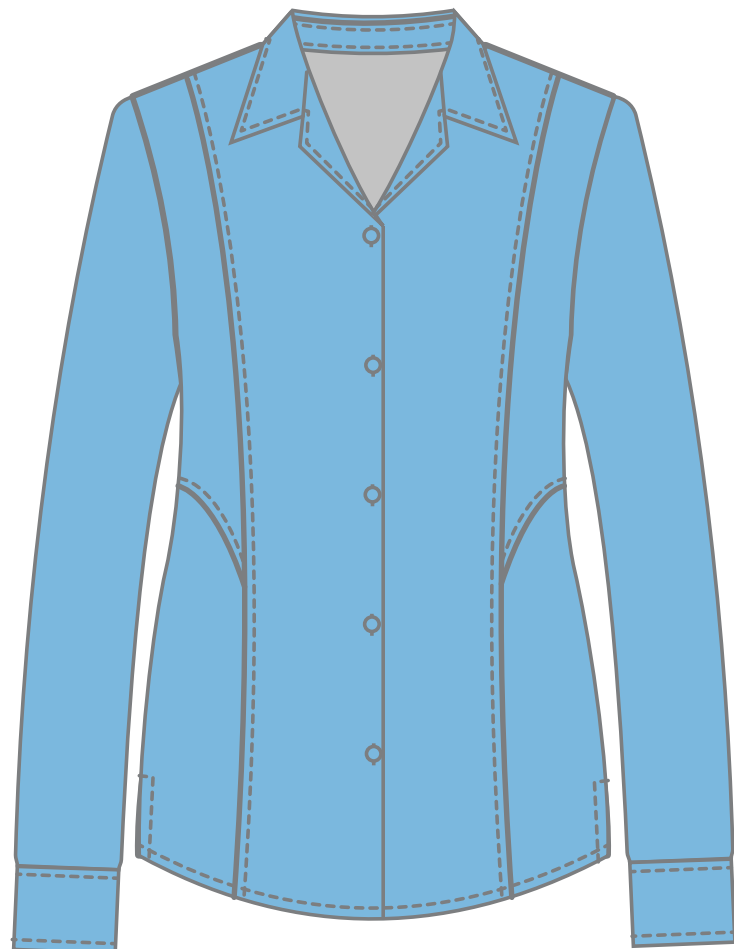
£26.50 ex VAT



£26.50 ex VAT



Textured Blouse  
£22.50 ex VAT (Twin Pack)



Textured Blouse  
£22.50 ex VAT (Twin Pack)



£36.50 ex VAT



£38.00 ex VAT

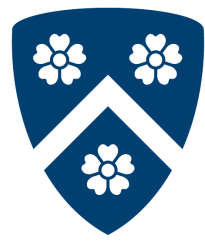


£38.50 ex VAT





# Year 6 – Year 11



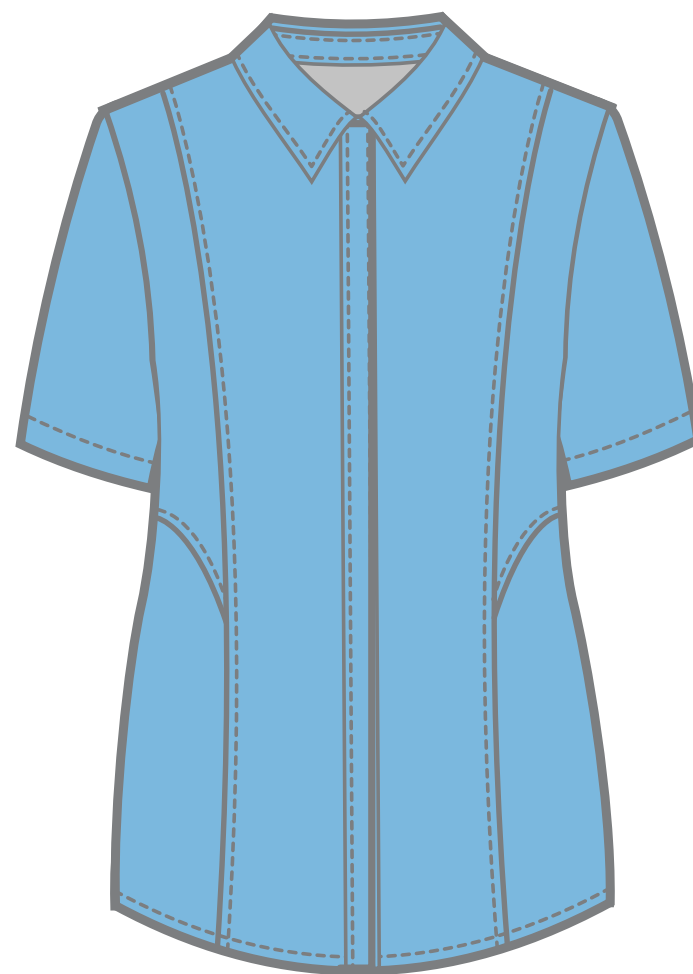
**Tormead**  
SCHOOL



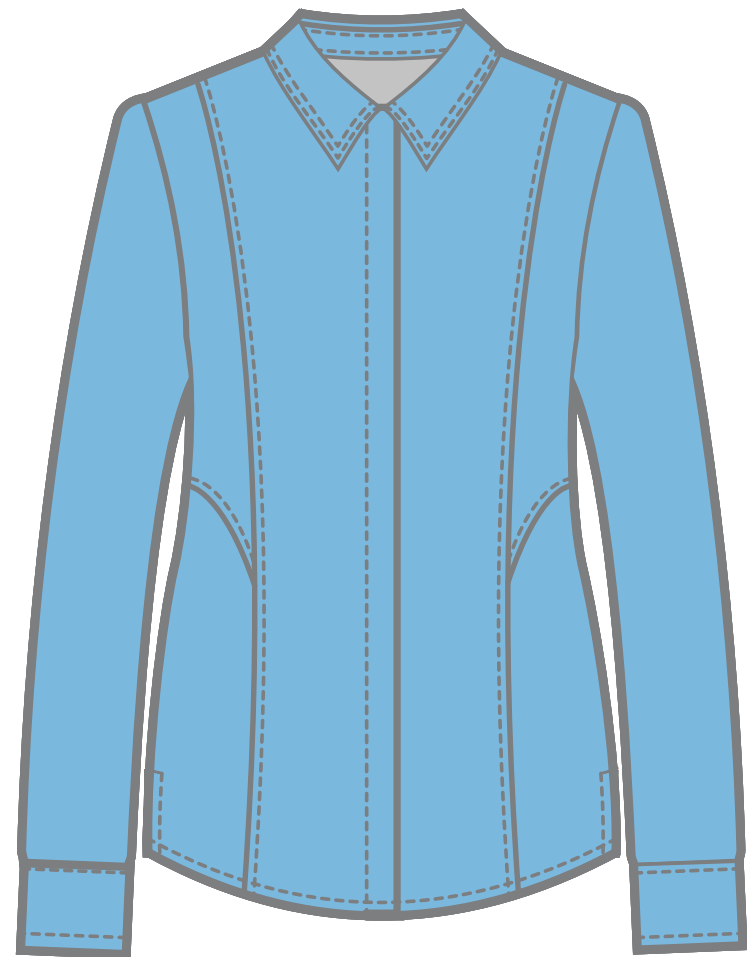
£86.50 ex VAT



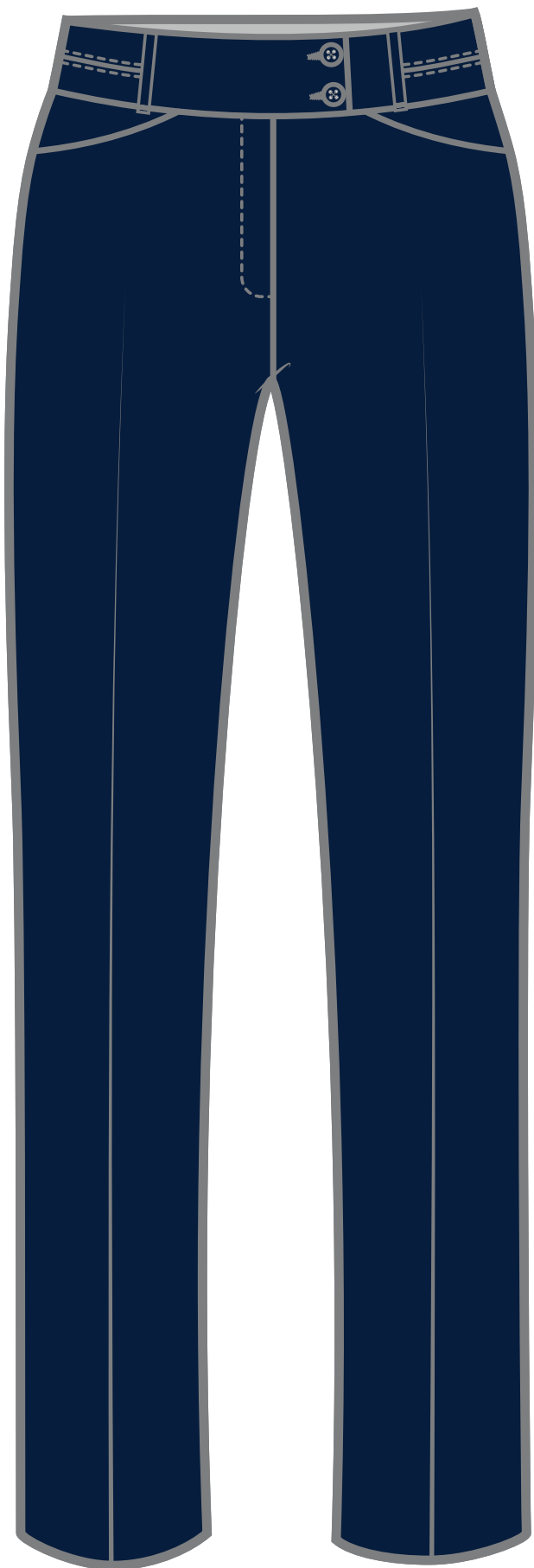
£26.50 ex VAT



Textured Blouse  
£22.50 ex VAT (Twin Pack)



Textured Blouse  
£22.50 ex VAT (Twin Pack)



£38.00 ex VAT



£38.50 ex VAT



# Descriptions - BA Tormead School Option 6



## Reception to Year 2

- Blue revere collar blouse long sleeve
- Blue revere collar blouse short sleeve
- Navy cardigan with blue trim
- Navy reversible stormproof jacket, crested
- Blue & white floral (9861B) Beatice summer dress with white cuffs & collar
- Bespoke plaid pinafore

## Year 6 to Year 11

- Navy Polywool style J jacket, crested lapel, sky lining and sky piping to pockets
- Blue covered placket blouse
- Navy classic fit trousers
- Bespoke plaid Alison style skirt
- Dark Sky scoop neck jumper with navy trim

## Year 3 - Year 5

- Blue revere collar blouse long sleeve
- Blue revere collar blouse short sleeve
- Navy cardigan with blue trim
- Dark Sky v-neck jumper with navy trim
- Navy reversible stormproof jacket, crested
- Bespoke plaid Alison style skirt
- Blue & white floral (9861B) Beatice summer dress with white cuffs & collar
- Navy classic fit trousers