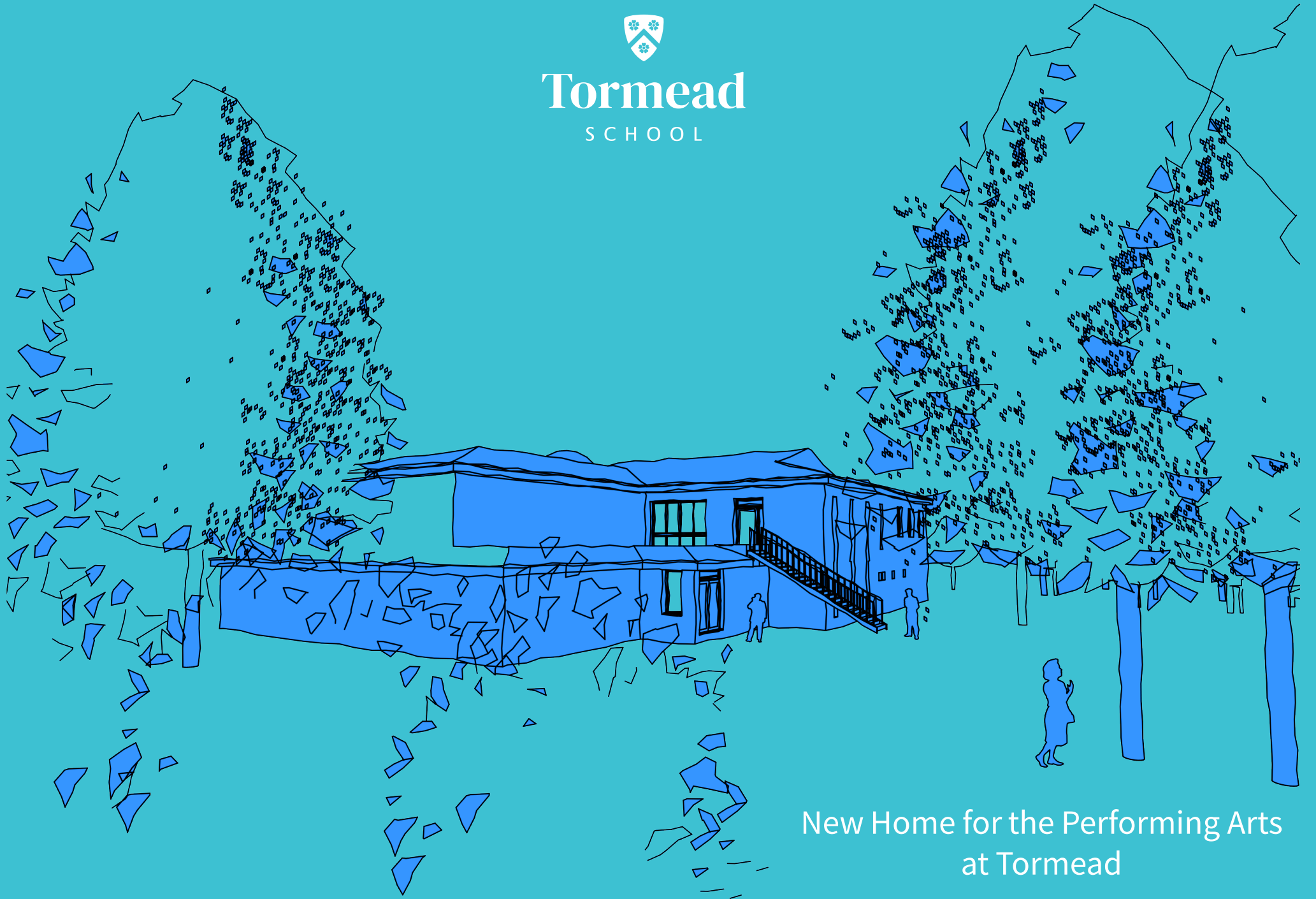




Tormead

SCHOOL



New Home for the Performing Arts
at Tormead



Dear members of the Tormead community,

I am proud to announce that Tormead School will be submitting a planning application for the extension of the JCS Performing Arts Building. This project will provide an outstanding base for our musicians and dramatists over the years to come and has been designed in discussion with our specialist teachers. The main aspect of this build will include a significantly enlarged auditorium and theatre space, with additional features, such as a corridor linking the stage wings, a green room and more space for instrument and costume storage. On the eve of Tormead's most ambitious musical to date, *Legally Blonde*, to be performed at the Yvonne Arnaud theatre next week, this project will support our pupils to fulfil their potential in the Performing Arts. I hope we can rely on your support through the planning process and if you have any questions, the Development and Alumni Office would be pleased to answer them.

David Boyd



Tormead

SCHOOL



This proposed build will help our already talented performing artists to shine in a state-of-the-art space that allows for greater freedom of expression. The improved flow of the building layout will enable the JCS to become a hub for the performing arts - a positive space where students can feel free to come and express themselves through drama and music. It will allow for drama and music lessons to be taught in a more appropriate setting, supporting the focus of these subjects on developing practical skills that are useful outside of the classroom, such as communication, self-control, co-operation, leadership and, most importantly, self-confidence. Better teaching and rehearsal spaces and



an improved auditorium will provide a state-of-the-art performance space to showcase the talents of our musicians and actors. In addition to a larger performance space and improved acoustics for our musicians, there will be greater opportunities for students to work behind-the-scenes as directors, sound engineers, lighting, costume, projection and/or set designers as well as in stage management roles. The design will truly transform the quality of performing arts teaching and learning, empowering us in our quest to make our students the confident leaders of tomorrow.

Ashley Campbell

HEAD OF DRAMA

Amy Ward

DIRECTOR OF MUSIC





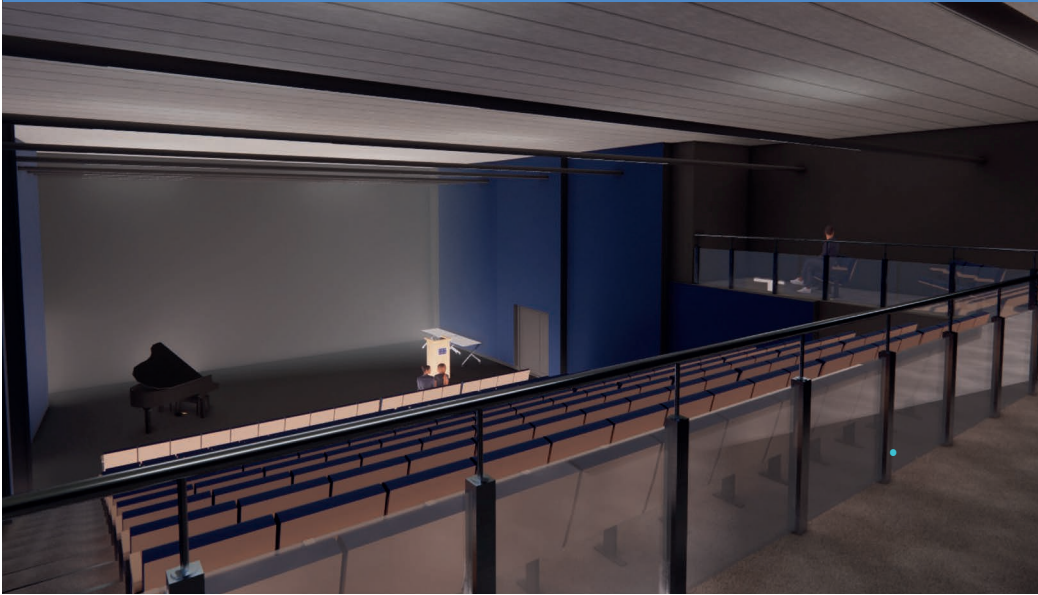
In 2021, Tormead appointed Lytle Associates to prepare a masterplan for the Senior School campus and consider the next priorities for development. The masterplan involved an overview and analysis of the site and consultation with staff, students and parents. Priorities and proposals were identified for new accommodation and a framework set out for future development over the next five to ten years.

The Performing Arts provision at Tormead and the size of the performing arts auditorium space were identified as high priorities within the masterplan consultation. Drama and music are popular and successful departments within the school, and a project to extend and improve the performing arts space was widely suggested as something that could have a big impact on the quality of teaching and learning.

The proposed scheme will expand the existing JCS Performing Arts building to provide an enlarged auditorium, improved backstage area, green room, storage and ancillary areas, all to meet the educational need of existing students at the school. There is no increase in pupil numbers associated with this development.

The Development Office is inviting any organisations or individuals who may be interested in supporting this project to get in touch alumnae@tormeadschool.org.uk

Visualisation: Perspective view of auditorium to single level stage



Rendered Auditorium View - Single level stage with tiered retractable seating



Proposed Development

The proposed extension to the performing arts building at Tormead School will provide the music and drama department with the facilities they need to teach the current curriculum and meet the needs of existing pupils at the school. The extension will include:

- Enlarged auditorium with audience capacity increased from 121 to 261 to allow large scale productions to be accommodated in the dedicated theatre space
- Theatre reconfigured to allow audience access from the first floor, with an alternative ground floor accessible route
- Flat stage floor offering greater flexibility for drama and other school uses
- Backstage area with sufficient space for safe movement of performers, set and props
- Green room located close to backstage area
- Good size drama store with direct access to auditorium and sufficient space for storage of set, props, costumes and technical equipment
- Box office and bar areas serving the existing foyer to allow students experience of running a professional front of house operation
- New music ensemble room for small group practice and teaching
- Large, easily accessible ground floor store for students' musical instruments, with bespoke racking to create a safe and secure storage facility
- New department store – releasing existing ensemble room for teaching and rehearsal rather than storage
- New larger practice room
- Two smaller practice rooms combined to create a more practical music teaching space
- The space to deliver the full GCSE and A Level drama curriculum
- A high-quality performance venue for the whole school community

Interior View - Auditorium



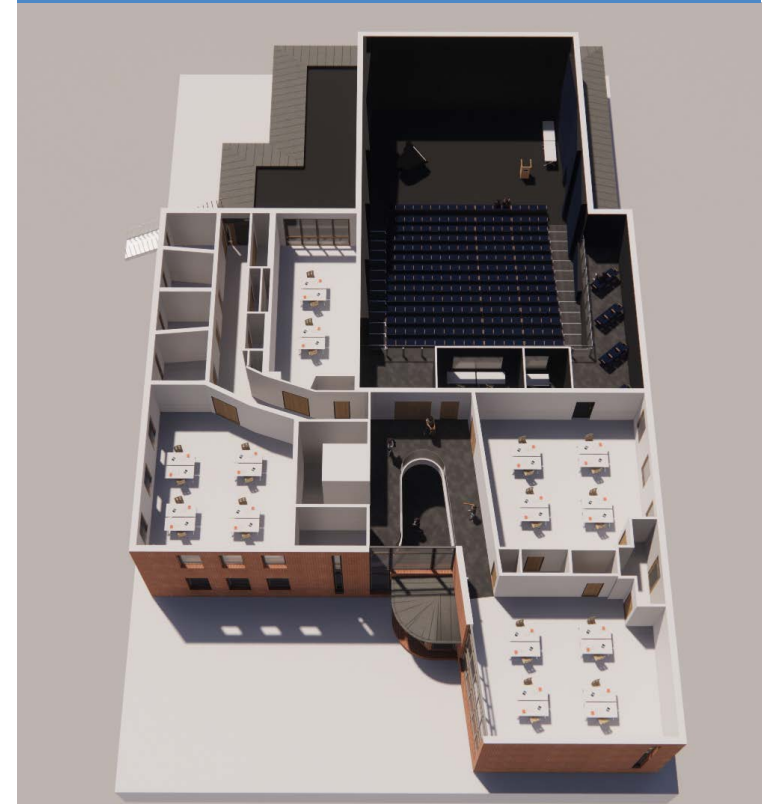
Interior View - Foyer 1

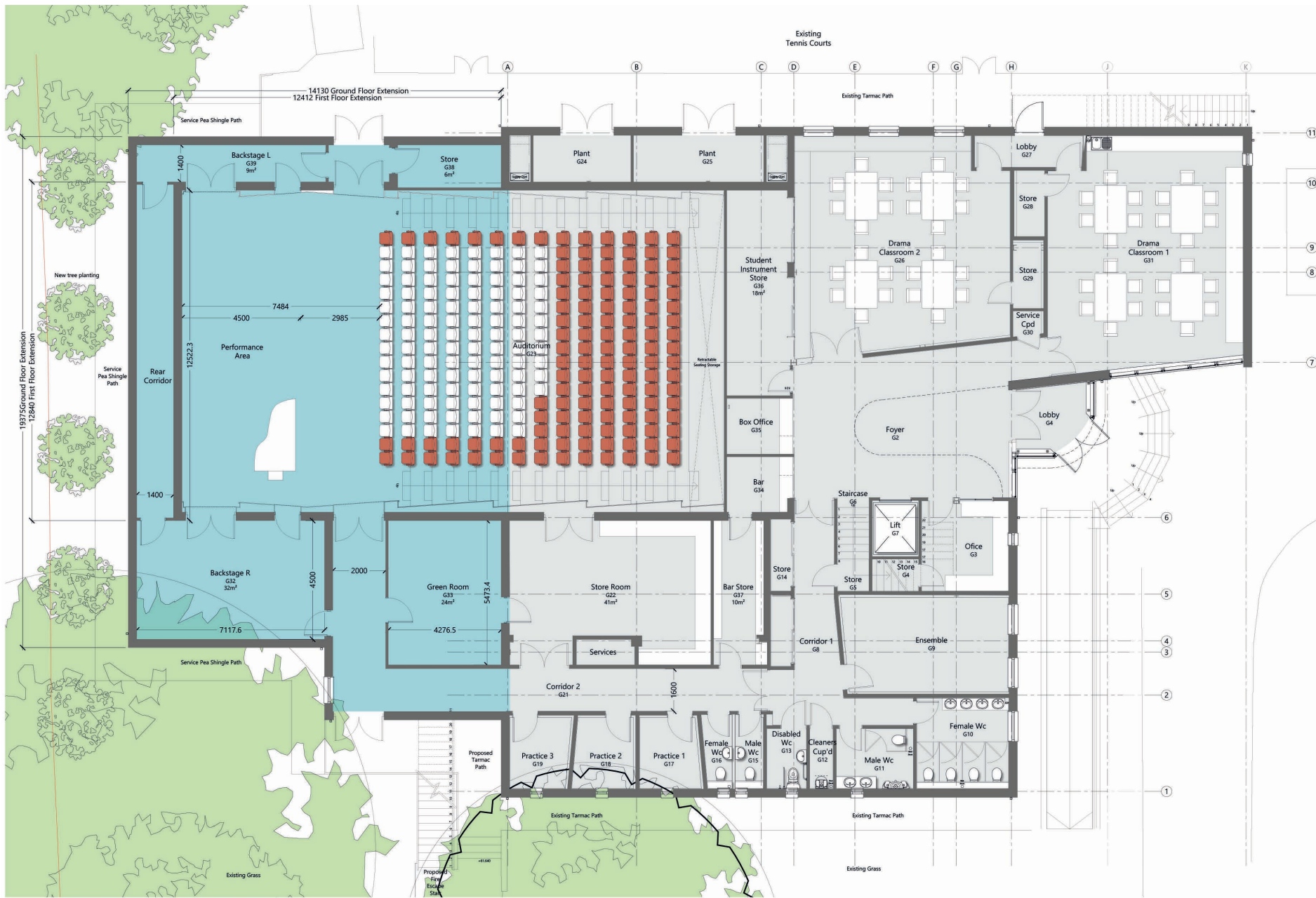






Top View



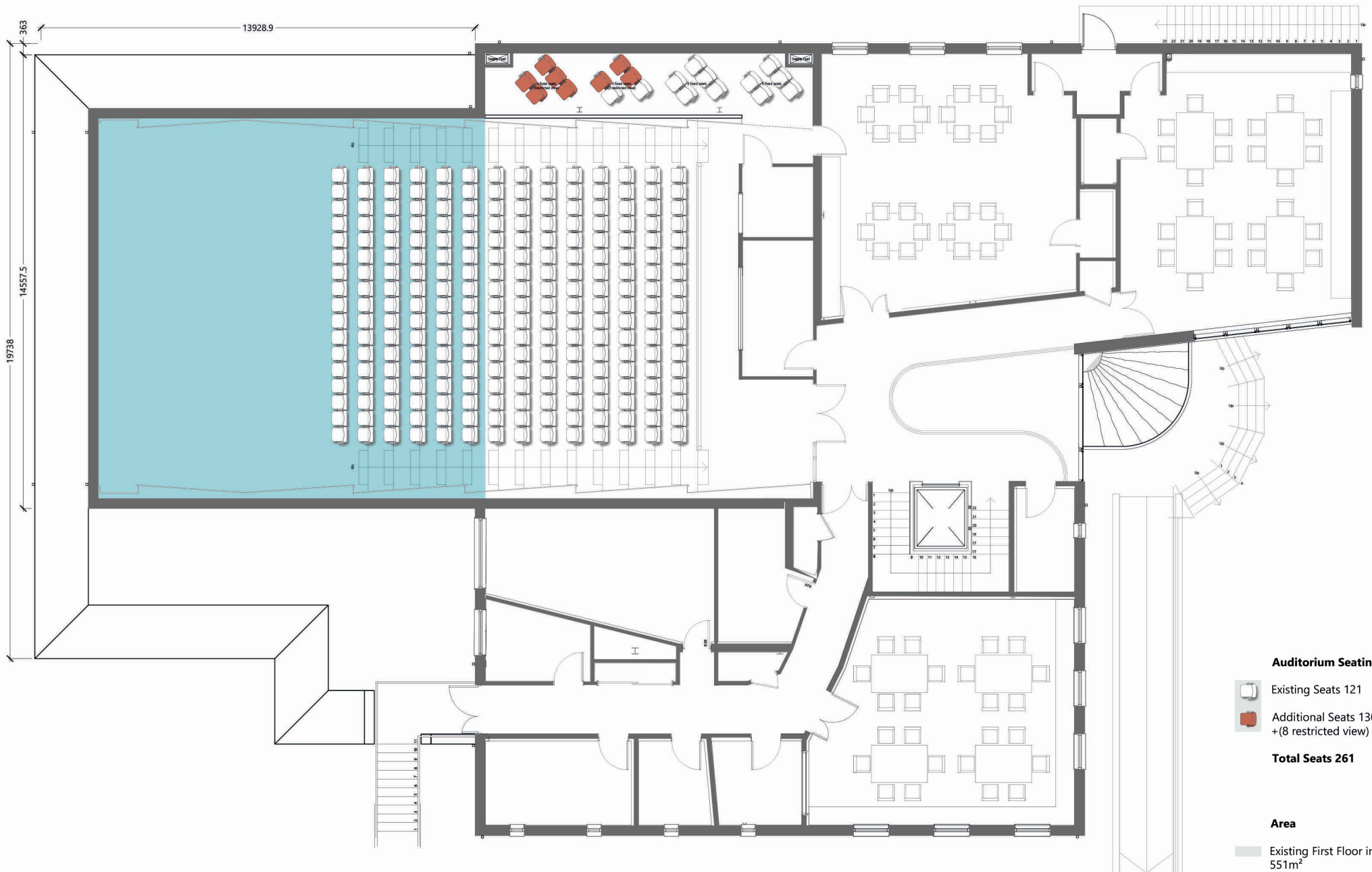
Top View









- Auditorium Seating**
-  Existing Seats 121
 -  Additional Seats 132
+(8 restricted view)
- Total Seats 261**
- Area**
-  Existing Gnd. int. area = 553m²
 -  Proposed Gnd. int. area = 283m²
- Total Gnd. Floor Int. Area 836m²**

Proposed Ground Floor Plan



- Auditorium Seating**
-  Existing Seats 121
 -  Additional Seats 130
+ (8 restricted view)
 - Total Seats 261**
- Area**
-  Existing First Floor int. area = 551m²
 -  Proposed First Floor int. area = 147m²
 - Total First Floor Int. Area 698m²**

Proposed First Floor Plan



North West Elevation



North East Elevation

Before



After

New Extension

